



Kentucky State Capitol Governor's Mansion The Old Governor's Mansion

The State Capitol Tour, 700 Capital Avenue

This tour discusses some of the architectural features of the building, along with information about the three branches of government that the building houses. The tour includes the rotunda, state reception room, the supreme court, house chambers and senate chambers.

Grades K - 12, maximum 70 per tour, year-round, 45 - 60 minutes.

Guided tours are available from 8:30 a.m. to 3:30 p.m., Monday - Friday.

Governor's Mansion Tour, 700 Capital Avenue

Located across from the Capitol building, this tour of the Governor's residence focuses on the architectural features of the building and its famous occupants. The tour is first floor only.

Grades K - 12, maximum 70 per tour, year round, 30 - 45 minutes.

The Governor's Mansion is open to the public from 9:00 a.m. to 11:00 a.m., Tuesday and Thursday. In April and May from 9:00 a.m. to 11:00 a.m., Tuesday, Wednesday and Thursday.

Old Governor's Mansion Tour, 420 High Street

This federal mansion, home to 33 Kentucky governors from 1798 - 1914, has recently been remodeled and is now reopen for tours. This tour, which discusses the building and its famous occupants includes the first floor only.

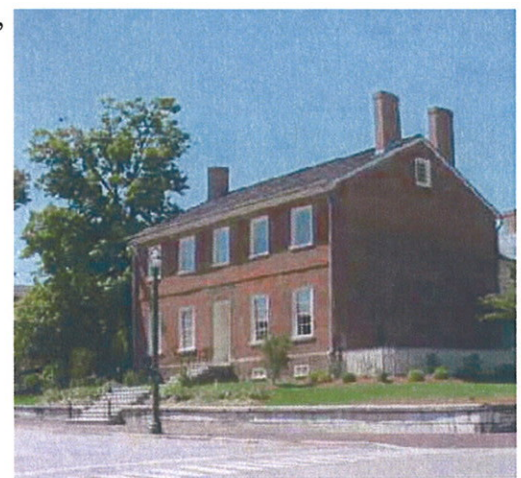
Grades K - 12, maximum 50 per tour, year-round, 30 - 45 minutes.

The Old Governor's Mansion is open to the public from 1:30 p.m. -to 3:30 p.m., Tuesday and Thursday.

****All of the above tours may change or be cancelled with no advance notice due to events/activities taking place in the buildings*

Admission to the Capitol, Governor's Mansion and Old Governor's Mansion is free.

**To schedule a tour or for more information, contact:
Beverly Greenwell at the Capitol Tour Desk, (502) 564-3449,
or e-mail Beverly.Greenwell@ky.gov**





Canoe Kentucky

School Program Packages

Basic Programs

CANOE KENTUCKY Shop, 7323 Peaks Mill Road, Frankfort, KY 40601

A safety video introduces students to paddling a canoe or kayak on mild but moving waters. Indoor demonstrations provide “hands-on” basic skills and experience. Also addressed are how to rent and/or buy canoes and kayaks to meet specific personal needs and water venues; other great Kentucky paddling streams and waterways are noted; and other safety tips for planning a day on the water. Classes tour the largest paddlesports operation in the Mid-West. Grades 5-12, maximum of 50 per hour, year-round, 60 minutes.

CAMP PLEASANT WOODS, 1140 Camp Pleasant Road in Frankfort.

An environmental education partner allows for land-based habitat and small watershed exploration. Featured are meadow, forest, pond, creek, limestone cliff, subsurface and canopy venues. An endangered plant and its habitat is studied.

Grades 8-12, 50 students maximum, year-round, 2 hours.

Adventure2/GO is a mobile operation that delivers adventures like those above to all Kentucky students.

Programs include in-class and off-site lectures, demonstrations and experiential environmental education, frontier history and skills, prehistoric geography and geology, and paddlesports instruction, demonstrations and field trips to related local sites.

Grades 5-12, 25 students minimum-no maximum for in-school programs, school year only, 45 minutes and up.

Packages result in cost reductions of 25% from \$20 to \$15 per student, plus travel expenses (meals and lodging if necessary).

CONTACT by phone at (888) CANOEKY, by email: CANOEKY@aol.com or info@adventure2go.com, or by mail at the above address.





Liberty Hall Historic Site



Basic Tour

Liberty Hall, 218 Wilkinson Street

Take a journey into the first years of our capital's settlement by exploring the home of John Brown, one of Kentucky's first United States senators, and Margaretta Brown, John's wife, advocate for women's education, and opponent of slavery. Through hands-on discovery, students will learn more about the lives of the Brown family and their role in developing Kentucky.

Grades 4-12, maximum 75 students*, year-round, 90 minutes.

One (1) adult chaperone per every ten (10) students required.

In-depth tour programs

April Fools Tour challenges students to pick out contemporary objects that do not belong in the historic house and to identify its historic equivalent. This program explores the evolution of technology and the means by which our consumables are produced today versus two hundred years ago.

Grades 2-5, maximum 75 students*, year-round, 90 minutes.

One (1) adult chaperone per every ten (10) students required.

What Does It Mean to Be a Citizen of the United States of America?

provides students with an opportunity to explore their rights and responsibilities as a citizen by examining the lives of the men and women of Liberty Hall Historic Site. Students will use primary resources and artifacts from the collection to explore the definition of a responsible citizen.

Grades 4-5, maximum 50 students*, year-round, 90 minutes.

One (1) adult chaperone per every ten (10) students required.



Seeing History Through Creative Writing encourages students to bring the Brown family to life through the examination of the artifacts that they left behind as records of their lives. Students will be guided through a creative writing exercise. Students will produce their own writing pieces to be taken back to school with them. Grades 4-5, maximum 50 students*, year-round, 90 minutes. One (1) adult chaperone per every ten (10) students required.

Additional Programs

With advance notice, Liberty Hall Historic Site can tailor a visit to your curriculum needs. Other suggested site related subjects include Kentucky: settlement to statehood; Kentucky political history; the Civil War; the natural environment; women's history; Kentucky artists and/or art; and geography.

Basic Information

Admission: There is no charge for students or any accompanying adults or teachers when the tour is scheduled ahead of time through a public, private or home school.

Availability: Liberty Hall Historic Site is open for school groups year round. Basic Tours are available Tuesday through Friday at 10:30, 12:00, 1:30, and 3:00. However, special arrangements can be made to meet the needs of the school.

Accessibility: Liberty Hall is currently not fully ADA compliant. Please contact for specific accessibility questions.

Restrooms: Limited restroom facilities are available.

Contact: Nicole Markle at (502) 227-2560 or (888) 516-5101 or libhall@dcr.net
218 Wilkinson Street Frankfort, KY 40601


Website: www.libertyhall.org

*Note: Arrangements can be made to accommodate larger groups on a case by case basis.





Capital City Museum & Fort Hill



Tour Programs

General James Wilkinson, the founder of Frankfort, will host a press conference on the steps of the Old State Capitol. Students will receive prepared questions about Frankfort's history to ask Gen. Wilkinson. Grades 3-12, maximum 100 students per program, weather permitting, 15-60 minutes.

Fort Hill features two Civil War Forts, the Sullivan House Stage Coach Inn and interpretive center, and a dramatic overlook of the City of Frankfort. The tour discusses life in Kentucky in the 1800s and the history of the Civil War in Frankfort.

Moderate hiking required.

Grades K-12, maximum 50 students per program, weather permitting, 60-90 minutes.

Capital City Museum, 325 Ann Street

Tours are self-guided, but they begin with a brief overview of Frankfort's history within the context of Kentucky's history. Exhibits include information about how Frankfort became Kentucky's capital; citizens at school, work and play; city, state and business services in Frankfort.

Grades 4-12, maximum 30 students per half hour, afternoons only, 30 minutes.

The Capital City Museum is open 10 a.m. to 4 p.m., Monday-Saturday.

Fort Hill is open to vehicular traffic Tues/Thurs/Sat 11 a.m. to 4 p.m. Memorial Day to October 31st.

Capital City Museum and Fort Hill tours are free. Tours must be scheduled at least four weeks in advance.

To schedule a tour or for more information, contact: Russ Hatter or Nicky Hughes at (502) 696-0607, 696-9127 or email: rush@mis.net





Rebecca Ruth Candy & Tours



112 East Second Street

The “Inventors of Bourbon Ball Candy” invite you to take a peek into the wonderful world of candy making. This candy business began nearly a century ago in 1919.

Two young women, Rebecca and Ruth, started this sweet business one year before women had the right to vote. Today, Ruth’s family continues making candy with

the same time proven secret recipes and methods. This tour provides a fun filled, informative and delicious field trip. Tour highlights include: an educational video, a marble slab that dates back to 1854, and elements of the Ruth Booe Story. This is living history in a real working candy factory. The Staff at Rebecca Ruth are dedicated to your school group’s satisfaction. Please call or email for special concerns. Our Staff can put together “budget bags” for each child if requested. “Budget Bags” are made to a dollar amount specified by the teacher and offer a quick, efficient way to get children through the retail area. Our Staff can also offer “Theme Based” tours to reinforce educational units.

Walk-Ins Welcome: groups larger than 10 are asked to call ahead

Tour Times: 9:30-12 & 1:00-4:30 Mon-Sat (Except Dec and 4 days before Valentines Day, Mothers Day & Easter)

Retail Hours: 9:00-5:30 Mon-Sat (Year Round)

Tour Admission: \$1 per person (2006 Tour Year)

To schedule a tour or for more information call (502) 223-7475 or email tours@rebeccaruth.com

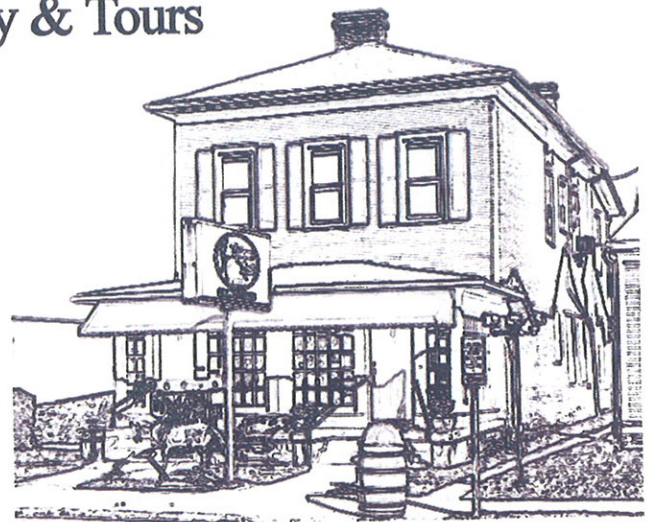
Website: www.rebeccaruth.com

(over)

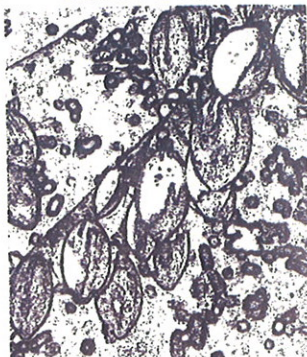
Rebecca Ruth Candy & Tours Coloring Page



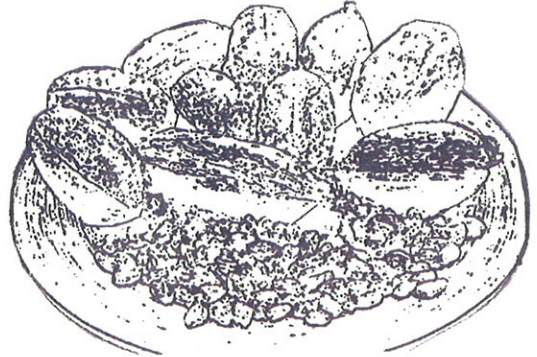
Ruth Booe

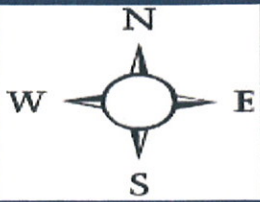


Cocoa Pods



Cocoa Pods & Nibs





Getting Here, Getting Around



For help planning your trip or making tour arrangements, contact the Frankfort Tourism Commission, (502) 875-8687 or 1-800-960-7200. E-mail us at inquire@visitfrankfort.com. You can also visit our website at www.visitfrankfort.com.

Directions to Frankfort/Franklin County Tourist & Convention Commission

Arrive Frankfort via I-64 from the east (Lexington Area)

Exit I-64 at exit 58, which is Versailles Road (Rt. #60). Turn right on (Rt. # 60) and proceed where it turns left (Rt. #60 and Rt. #460 which is Main Street). Continue on Main Street to Capital Avenue (stop light), turning left, cross the bridge and take an immediate right into our parking lot. We sit on the corner of 2nd and Capital Avenue. Our physical address is 100 Capital Avenue.

Arrive Frankfort via I-64 from the west (Louisville Area)

Exit I-64 at exit 53 to Frankfort (Rt. #127). Proceed to (Rt. #60) (stop light) turning right and continue down the hill past the Scenic Capitol Overlook, which becomes 2nd Street. Continue to Capital Avenue (stop light) and turn left . . . Another immediate left into our parking lot, which is behind our building. We sit on the corner of 2nd and Capital Avenue. Our physical address is 100 Capital Avenue.

Please see the enclosed Frankfort Visitor Map for locations of attractions, restaurants and places to stay.



Thomas D. Clark Center for Kentucky History Old State Capitol Kentucky Military History Museum

Basic tour programs

Thomas D. Clark Center for Kentucky History, 100 W. Broadway

A Kentucky Journey introduces students to Kentucky history as they place artifacts and other primary sources on a timeline that corresponds to the Center's main exhibit. Classes tour the 20,000 square-foot exhibit on their own after the program.

Grades 1-12, maximum 100 per half-hour, year-round, 60 minutes.

Old State Capitol, 300 W. Broadway

Tours feature the building and the events that occurred in it. Students learn about 19th-century government by examining a legislator's saddlebag and taking part in a mock vote in the Senate. Tours begin at the Thomas D. Clark Center for Kentucky History.

Grades P-12, maximum 60 students per half hour, year-round, 45 minutes.

Kentucky Military History Museum, 128 East Main Street

The exhibit introduces students to the roles of men and women in conflicts from the American Revolution to the Gulf War.

Grades 4-12, maximum 50 students per half hour, year-round, 30 minutes.

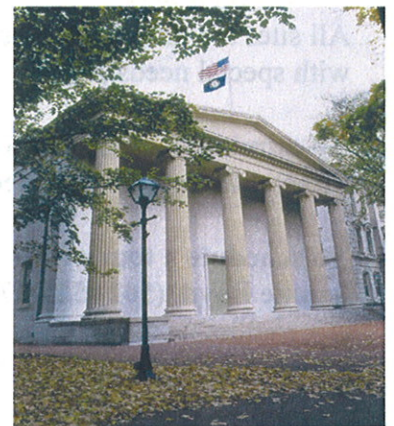
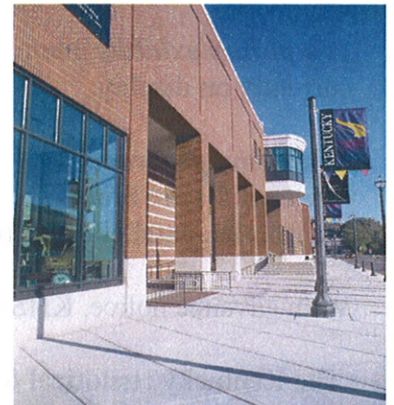
In-depth tour programs

Civil War Workers transforms students into soldiers and ammunition-factory workers through hands-on activities from marching to cartridge making.

Grades 4-5, maximum 25 students per program, late fall-winter, 90 minutes.

Journaling Through History traces Kentucky's story through artifacts and primary sources. After an introduction to the *Kentucky Journey* exhibit, students make journals and gather information in the exhibit for a writing assignment back in the classroom.

Grades 4-5, maximum 50 students per program, late fall-winter, 90 minutes.



Pioneer Life in Kentucky immerses students in frontier family life through a discovery tour of the frontier-era exhibits and hands-on activities like making home remedies and playing 18th-century games. Grades P-5, maximum 50 students per program, late fall-winter, 90 minutes.

Women and Slaves in Antebellum Kentucky introduces students to the daily lives of these two groups through a museum theatre performance about Mary Todd and activities in the *Kentucky Journey* exhibit and classroom. Grades 6-8, maximum 50 students per program, late fall-winter, 90 minutes.

Temporary exhibits interpret the museum's collections and Kentucky heritage themes. Ask about the exhibit currently on display.

Additional programs

Museum theatre brings the past to life in the museum galleries through plays that explore exhibit themes in the frontier, antebellum, Civil War, coal town, and Depression areas.

With advance notice, KHS staff can tailor a visit to your curriculum needs.

The Kentucky Historical Society's museums are open from 10 a.m. to 5 p.m., Tuesday – Saturday

All sites are handicap accessible. With advance notice, KHS will make arrangements to accommodate visitors with special needs.

An admission charge of \$2 per person for school groups covers admission to all three Kentucky Historical Sites, theatre performances, and special tour programs. Scholarships are available.

**To schedule a tour or for more information, contact:
Jennie Boyd, (502) 564-1792 x. 4424, jennie.boyd@ky.gov**

Website: <http://history.ky.gov>





Salato Wildlife Education Center



Basic Programs

Salato Wildlife Education Center #1 Sportsman's Lane

Offers groups an educational program to compliment your tour of the facility. All programs are tailored for the age and needs of the group (grades K-12). Programs are available Tuesday, Wednesday, and Thursday at 9:00, 10:00, and 11:00 a.m., and must be scheduled in advance. Salato's educational programs are designed to assist teachers with core content, particularly in the area of science. With advanced notice, other programs can be tailored to areas of study such as endangered species, food chains, etc.. Each presentation is 30 minutes with 15 minutes for questions with a maximum of 50 students per program. Multiple program times can be offered to accommodate large groups. One (1) adult chaperone per ten (10) children required. Group should dress appropriately for the weather. The facility is open and programs are provided year-round. Programs include:

Kentucky Birds of Prey features a live bird.

Kentucky Reptiles features live reptiles and other artifacts.

Kentucky Mammals incorporates hides, skulls, and other artifacts.

Kentucky's Native People features authentic native artifacts.

Kentucky's Native Plants features a walk through some of Salato's native habitats.

Self-guided Tours

Indoor exhibits include aquariums, venomous snakes, restored species, frogs, turtles, bee hive, interactive computer programs, and many more.

Outdoor Exhibits include native plants, elk, bison, deer, bald eagles, bobcats, black bears, the Living Stream, and specific habitats such as mixed mesophytic forest, eastern deciduous forest, marsh, and a wet meadow. These exhibits are accessed by a paved path, which can accommodate both wheelchairs and strollers. The center offers an interpretive brochure at the front desk to answer questions along the paved trail.



Hiking Trails include the HabiTrek Trail, an easy, one-mile loop through forested and prairie habitats, which features karst topography as well as rotten logs, rock piles, and standing snags that offer opportunities to study insect life, fungi, nesting birds, and small mammal dens. The more challenging Pea Ridge Loop Trail is a moderately strenuous, 3-mile hike through 120 acres of mature oak-hickory and cedar forests with a pond and ephemeral streams. This trail is designed as a model wildlife management area to demonstrate some of the techniques used by the KDFWR to manage wildlife habitat. Hiking trails are NOT wheelchair/stroller accessible.

Additional Amenities

Two fishing lakes are available on the campus. Salato will provide children with poles for a refundable deposit. Bring your own bait. Persons age 16 and over must have a valid fishing license which may be purchased at the front desk. Grounds are open dawn to dusk, year-round.

Professional Development

Kentucky Department of Fish and Wildlife Resources offers professional development workshops. Workshops include Project WILD, Project WILD Aquatic, Project Flying WILD, Leopold Education Project, and Project Archeology. Workshops are available throughout the year for a nominal fee. Scholarships are available. Salato offers additional programs on weekends on various subjects (i.e., orienteering, fishing, nature journaling) for a nominal fee to nurture personal interests and to teach skills that can be passed on to students.

Additional information

The Salato Wildlife Education Center offers programs, exhibits, and trails. September 1 to May 31, Salato is open 9:00 a.m.-5:00 p.m. Tuesday-Friday, 10:00 a.m.-5:00 p.m. Saturday, and 1:00-5:00 p.m. Sunday. June 1 to August 31, Salato is open 9:00 a.m.-6:00 p.m. Tuesday-Friday, 10:00 a.m.-6:00 p.m. Saturday, and 1:00-6:00 p.m. Sunday. Salato is closed on Mondays and state holidays.

To schedule a program or for more information, contact: (502) 564-7863 or 1-800-858-1549 and ask for the Salato Wildlife Education Center. Beginning Spring 2006, scheduling will be processed on-line through the Kentucky Department of Fish and Wildlife Resources listed below.

Websites: <http://fw.ky.gov> and www.kentuckyawake.org





Where To Eat Lunch



Schools that bring their lunch to eat outside can eat outside:

- In the Thomas D. Clark Center for Kentucky History garden
- On the Old State Capitol lawn
- At the Salato Center
- In the Liberty Hall gardens
- On the steps of the Kentucky State Capitol
- In the picnic shelter on Fort Hill
- Cove Springs Park

Schools that bring their lunch and need an indoor place to eat should contact the following locations for availability and reservations.

- Capitol Plaza Tower, 502-564-6704, plazainfodesk@ky.gov
- Frankfort Civic Center, 502-564-5335, wayne.azbill@ky.gov

Schools that want to buy boxed lunches and have it delivered to any of the above sites should contact:

- Cliffside, 502-223-3173
- Fazoli's, 502-875-5990
- Gibby's, 502-223-4429
- Sonic, 502-696-9980
- Subway, 502-223-2360

Schools that want to buy their lunch should contact the following locations for advance reservations:

- Capitol Annex Cafeteria, 502-564-3142, eddie.hunt@ky.gov
- Transportation Building Cafeteria, 502-564-9597, rhonda.george@ky.gov
- McDonald's 502-227-8096



Where To Stay Overnight



- Best Western: 1-800-WESTERN or 502-695-6111 for Group Rates: www.bestwestern.com
- Bluegrass Inn: 1-800-322-1802 or 502-695-1800 for Group Rates: www.bluegrassinn.com
- Capital Plaza Hotel: 502-227-5100 for Group Rates: www.capitalplazaky.com
- Days Inn: 1-800-329-7466 or 502-875-2200 for Group Rates: www.daysinn.com
- Fairfield Inn: 502-695-8881 for Group Rates: www.marriott.com
- Hampton Inn: 1-800-HAMPTON or 502-223-7600 for Group Rates: www.hampton.com

You may contact The Frankfort Tourist Commission to make reservations/negotiate best group rate at 1-800-960-7200 or 502-875-8687. Our e-mail is: inquire@visitfrankfort.com and our website is: www.visitfrankfort.com





How To Fund Your Visit

Destination *Frankfort*
Kentucky



Heritage Education Mini-grants are available to schools to support field trips by K-12 classes to sites within 100 miles of the school. The goal of the Heritage Education Mini-grants is to provide opportunities for students to learn about and explore the history and heritage of their own community and region. Mini-grants may not be used to visit Kentucky Historical Society Sites, the State Fair or the State Capitol.

Scholarships to pay for admission to the Thomas D. Clark Center for Kentucky History, Old State Capitol and Kentucky Military History Museum are available to schools where 50% or more of the students are on free or reduced priced lunch.

For more information, contact Jennie Boyd, (502) 564-1792, jennie.boyd@ky.gov.





Connect With Your Legislator



A Visit to the Capitol

Many times the legislators will meet with school groups when they schedule a visit to the Capitol. All scheduled tour groups at the Capitol will have their group photo taken and will be provided with a packet of information about the Capitol and their government, compliments of their local senator and representative. (Copies of the photo will be mailed to the school/organization a few weeks after the tour.)

Additional Programs

America's Legislators Back to School Program is a nationwide program that encourages state legislators to visit classrooms in their district area. The program which kicks off in September and runs throughout the school year, is a great opportunity to meet with your legislators.

For more information about the program please visit our website at lrc.ky.gov

To make arrangements to schedule a Capitol tour and to meet your legislator, contact Karen Bourne or Jeanie Mitchell, (502) 564-8100 ext: 390, or e-mail Karen.Bourne@lrc.ky.gov

